



T



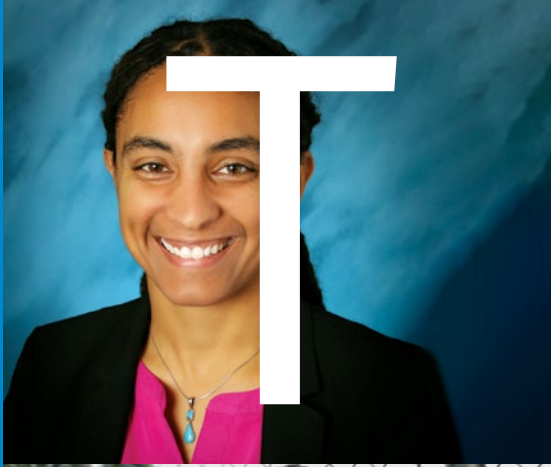
O



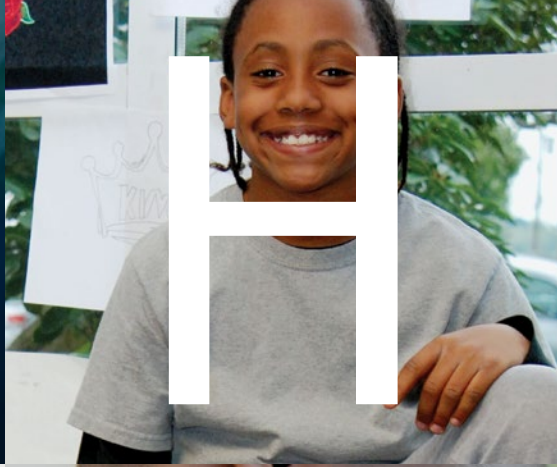
G



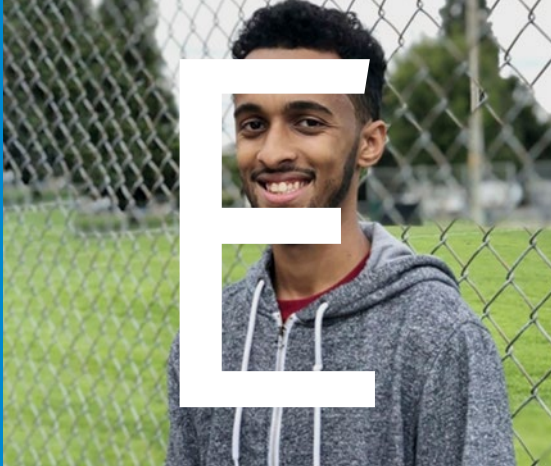
E



T



H



E



R

Cover photos (clockwise from top left):

- 1) Youth from Techbridge Girls**†
- 2) Maria Johnson, School's Out Washington Spokane County coach-coordinator
- 3) Claire Wilson, Washington State senator
- 4) Youth from Highlands Neighborhood Center**†
- 5) Youth from Highlands Neighborhood Center**†
- 6) Keith Green II, Highlands Neighborhood Center recreation specialist†
- 7) Ebony Pattenaude, Renton Innovation Zone director of partnerships & early learning†
- 8) Youth from the Birch Creek Youth Center in Kent†

* Photography: Rita Alcantara

† Best Starts for Kids partner

Design: Patrick Mullins, M-Made

Writer: Liz Murtaugh Gillespie



Students in Highlands' Neighborhood Center's STREAM TEAM,
a Best Starts for Kids Collaborative.*

together we GROW

Dear Community,

We believe that every young person should have ample access to ongoing learning opportunities that embrace their cultures and unique identities, and foster feelings of belonging, personal agency, and love of learning. We know youth thrive with engaging and supportive adults, welcoming environments, and opportunities to discover their passions. To achieve this, we focus our efforts on young people who are systematically furthest from these opportunities — youth of color and youth in poverty.

To truly support youth potential and address these egregious opportunity gaps, we must think holistically about changing the myriad systems that impact a young person's development. While School's Out Washington focuses on increasing access and improving quality and equity within summer and afterschool programs, we do so as part of a larger ecosystem of partners.

Together, we work to ensure that these fundamental expanded learning opportunities are integrated into and aligned with positive systems of support in school, housing, and beyond that all young people navigate.

This is an ambitious focus and requires partnership and collaboration at every level of our work. We are proud to be connected to a strong community of youth advocates, providers, policy makers, community leaders, and funders who share this vision, and with whom we are working ambitiously to build and transform these systems of support to advance equity.

In this report, we celebrate the impact of our partnerships and the widespread transformation that is possible when we work together.



Elizabeth Whitford
CEO



Mariela Barriga
Board President

Youth and staff thrive in Best Starts for Kids collaborative

Kids at Highlands Neighborhood Center in northeast Renton used to come and go as they pleased after school, hanging out for a bit then heading off to a nearby grocery store. They rarely did homework. When they got in trouble, they'd get sent home for a few days.

"Some parents would say, 'That's where the bad kids go,'" recalls Keith Green II, a recreation specialist at Highlands, one of Renton's two city-run neighborhood centers.

Today, thanks to a King County Best Starts for Kids Out-of-School Time grant and youth program quality coaching from School's Out Washington, Highlands is home to an award-winning afterschool collaborative called STREAM Team. (STREAM takes STEM, Science Technology Engineering and Math, and adds in Recreation and Art.)

Every afternoon, STREAM Team kids get a healthy snack and have more leeway about where and how they can work on their homework, listening to quiet music if it helps them focus.

Collaborative partner organizations Centro Rendu and Techbridge Girls offer classes in Spanish language and culture, computer coding, and business skills. There's also environmental science and more options are in the works, like cooking. Kids stepped up at a City Council meeting recently, calling for gardening, tetherball, sewing, and a youth group to help the homeless.

The common thread through all the great things happening at Highlands is in-depth program quality training, and coaching from School's Out Washington. This support is given to all Best Starts Out-of-School Time partners and is rooted in promoting social and emotional learning so kids can better manage their moods, set goals, make responsible decisions, and build stronger relationships — with teachers and classmates, family and friends.

"We used to deal with symptoms. Now we go for the cure," says Tom Puthoff, who has coordinated programs at Highlands for 25 years.

When kids struggle, STREAM Team staffers ask them what's up, calmly listen to what they say, and approach the issue as a problem

STREAM Team Partners

- St. Vincent De Paul's Centro Rendu
- Techbridge Girls
- Environmental Science Center at Seahurst Park



Photo by Rita Alcantara

they can solve. They've grown comfortable opening up about challenges they're experiencing at home or in school.

One boy who used to lash out with his fists has started breaking up fights at school.

"We've been learning how to take deep breaths and not let our emotions take control of us," says Josiah Palmer, a fifth-grader at Highlands Elementary School.

Highlands Elementary School Principal Alfred DeBlasio has worked closely with the staff at Highlands Neighborhood Center for years, collaborating on strategies to communicate positively with kids and make them feel safe, to give them a sense of belonging, during the school day and after.

"When I visit, it's so much calmer than it ever used to be," he says. "They're engaged, they have relationships with their instructors. STREAM Team has made such a positive impact. It's a foundational block that's really bringing the community together."

Best Starts for Kids is a voter-approved King County initiative that funds culturally relevant programs for children, youth, and families in underserved communities.

TOGETHER WE LEAD

Based on our long record of promoting high-quality and equitable practices in expanded learning, School's Out Washington (SOWA) was chosen by King County to lead and administer the Best Starts for Kids Quality Out-of-School Time investment.

Together with extensive community and stakeholder involvement and input, SOWA and King County designed an investment strategy with two funding models:

- 1) **Place-Based Partnerships** – strengthening collaboratives to provide coordinated and dynamic afterschool and summer programming to young people in communities that lack access to high-quality out-of-school-time programs.
- 2) **People of Color-Led Organizations** – building program capacity and reach for culturally-responsive out-of-school-time programs for and by underserved communities of color.

Support goes far beyond just dollars; at its core, the investment aims to build up programs and shift the way they work together.

together we TRANSFORM



Sherry Campbell and Halley Coutts-Hites with their School's Out Washington Coach, Maria Johnson

Coaching gives longtime educator new tools to better connect with kids

Every day when students file into the after-school program at Spokane's Browne Elementary School, Sherry Campbell turns toward each of them, looks them in the eye, and greets them by name with a high-five or cheery, "How ya doin'?"

As they settle in for snack time, Sherry's co-teacher, Halley Coutts-Hites, asks them how they're feeling, and they pick an emoji that matches their mood. Whether they're happy or sad, upset or cool as a smiley face in sunglasses, they get a chance to share their feelings.

These two simple practices plus ongoing training and coaching from School's Out Washington, have transformed what used to be a chaotic program into one where students can easily glide into calming mindfulness activities like group meditations.

Now, instead of refusing to clean up snack-time messes, they all take part in tidying up. Many kids who used to fuss at homework time when they had just two options

(homework or silent reading), now delight in drawing or coloring and can talk to friends at a whisper.

"They love to draw pictures, so by adding that creativity to homework time, it's really calmed things down," Sherry says.

At the start of her training and coaching with SOWA, Sherry wondered what she could possibly learn that she hadn't been taught before. But she quickly realized School's Out's approach is different.

Her coach came to meet and spend time with Sherry and her kids on site to see first-hand what was going well and identify opportunities to build on the program's strengths.

"It made such a huge difference," Sherry says. "She came to me, saw my frustrations, realized that [some] practices don't always work, and said, 'OK, then, let's try something else.'"



"Coaching is really the essence of meeting people where they're at and creating spaces that enable us to have thoughtful conversations about what a program needs,"

explains Maria Johnson, School's Out youth program quality coach coordinator in Spokane.

"It's all about respecting the culture of a program for what it is, identifying what's working well and creating opportunities to grow," furthers Maria.

It's exciting to see the progress both youth and staff are making at programs like Browne Elementary, one of more than a dozen out-of-school programs in Eastern Washington that SOWA now works with thanks to the Spokane office that opened in 2017. This expansion was made possible from the state-funded Expanded Learning Opportunities Quality Initiative.

"Sherry's dedication to young people is exemplary," Maria says. "She is actively making a difference in her community."

together we REACH

School's Out Washington partners with organizations, government agencies, and funders across the state to build a strong, unified expanded learning system that gives all young people equitable access to engaging learning outside of school.

HOUSING AND EXPANDED LEARNING OPPORTUNITIES (HELO) NETWORK

King County Housing Authority, Housing Development Consortium, Youth Development Executives of King County
Engaging youth programs are embedded in affordable housing sites, bolstering academics and social and emotional learning. Quality development and trainings led by SOWA are infused in all programs through a network of housing and youth development professionals.

BEST START FOR KIDS

King County
Thanks to a \$10 million investment from King County, 34 afterschool programs are receiving three years of funding and rigorous quality improvement supports from School's Out Washington to bring vibrant expanded learning to under-resourced communities.

TACOMA WHOLE CHILD PARTNERSHIP

Greater Tacoma Community Foundation, Tacoma Public Schools
Teachers and providers of high quality expanded learning are aligning their practice to build kids' social and emotional skills, both during and after school, at 12 public elementary schools in Tacoma.

THE ROADMAP PROJECT

Community Center for Education Results, Youth Development Executives of King County
This collective impact initiative addresses systemic barriers to racial equity and education opportunities in South Seattle and South King County. School's Out is a key partner in the Roadmap's focus on equitable access to high quality expanded learning.

21ST CENTURY COMMUNITY LEARNING CENTERS

Office of Superintendent of Public Instruction, Weikart Center for Youth Program Quality
High poverty, underserved schools receive critical support from the only dedicated federal funding stream for expanded learning, plus coaching, training, and continuous quality improvement from School's Out Washington.

FEED YOUR BRAIN

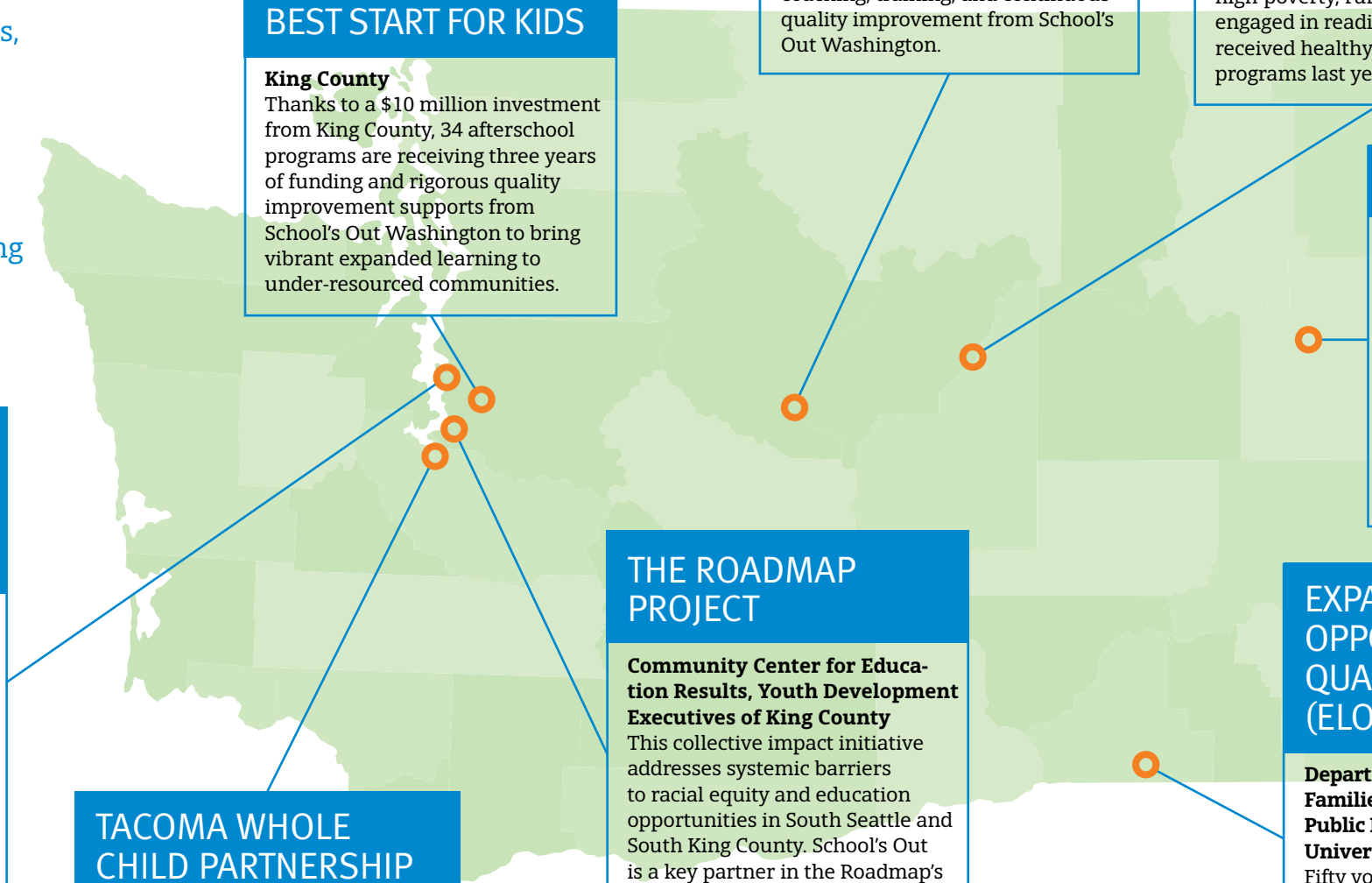
Discuren Charitable Foundation, Tulalip Tribes Charitable Fund
Through School's Out's longtime grantmaking program focused on combatting summer learning loss and hunger, children in 11 high-poverty, rural communities engaged in reading programs and received healthy meals at summer programs last year.

THE ZONE PROJECT

Spokane Public Schools, Gonzaga University, Boys & Girls Club, Northeast Community Center Association
School's Out is an advisor and training partner for this important cross-sector initiative that's tackling inequities and lack of access to high-quality in-school and expanded learning in Spokane's highest-poverty neighborhood.

EXPANDED LEARNING OPPORTUNITIES QUALITY INITIATIVE (ELOQI)

Department of Children, Youth, and Families; Office of Superintendent of Public Instruction; Child Care Aware; University of Washington
Fifty youth programs from King, Pierce, Spokane, and Walla Walla counties are part of this three-year initiative to build an expanded learning quality improvement system across the state. SOWA is supporting these providers with a rigorous quality improvement practice to improve youth outcomes.



together we LEAD



First-year lawmaker, longtime expanded learning champion

One of Washington's newest state lawmakers brings decades of leadership working with youth, families, educators, and policy makers to close the opportunity gap and challenge inequities in our early learning and educational systems.

Already during her first year in Olympia, Sen. Claire Wilson (D-Auburn) has started in-depth conversations about the importance of expanded learning. She draws on her 25 years as an administrator with the Puget

Sound Educational Service District, where her focus was early education and family involvement, as well as her longtime service as a Federal Way Public Schools board member.

"Sen. Wilson truly understands the critical role expanded learning plays in bringing kids' passion to light, engaging them in what they're learning outside the school day, and what a difference it makes for kids facing barriers to educational and life success," says School's Out Washington Policy and Advocacy Director David Beard.

We are grateful for Sen. Wilson's partnership and excited to continue working with her in years to come.

POLICY PROGRESS REPORT

- ✓ **Continued support in Olympia for the Expanded Learning Opportunities Quality Initiative (ELOQI)** to ensure more youth across Washington have access to high-quality afterschool and summer programs.
- ✓ **Bipartisan support in Congress to increase funding for 21st Century Community Learning Centers** following three consecutive attempts by the Trump Administration to eliminate the federal grants program serving high-poverty schools across the country.
- ✓ **Progress toward streamlining and improving school-age child care regulations**, working in partnership with the state's Department of Children, Youth, and Families and other stakeholders, so that providers can stay in the business of supporting children with high-quality learning environments.

In the first year of the 4-county Expanded Learning Opportunities Quality Initiative program, sites experienced higher levels of student engagement and fewer challenging behaviors as program quality improved.

LEARN MORE about how you can get involved with our public policy and advocacy work at schoolsoutwashington.org.



Northgate Elementary School 21st Century Community Learning Center program in Olympia with Rep. Javier Valdez (D-Seattle)

2018 IMPACT



2,028 coaching hours
982 training hours
668 programs impacted
2,445 adults trained
91,040 Washington youth reached



86% of youth in fall Best Starts for Kids Out-of-School Time programs were youth of color.

BEST STARTS FOR KIDS *Quality Out-of-School-Time Investment*
Increasing access to quality expanded learning in underserved communities

\$8.3 million
awarded over 3 years

34 programs funded
7,157 youth impacted



9 out of 10 Best Starts for Kids grantees made improvements in at least one of their goal areas in the first year.

55% of youth at Expanded Learning Opportunities Quality Initiative (ELOQI) sites received free or reduced-price lunch at school.



95% of children in Feed Your Brain programs maintained or improved their reading by at least one grade level.



FEED YOUR BRAIN

Grants to high-poverty, rural communities to provide summer learning opportunities and healthy meals to young people.

\$46,898 awarded

11 programs funded

1,067 youth impacted

REFUGEE SCHOOL IMPACT PROGRAM

(2017-2018 program year)
Partnering with school districts and community-based organizations to support refugee students and families.

\$445,000
awarded

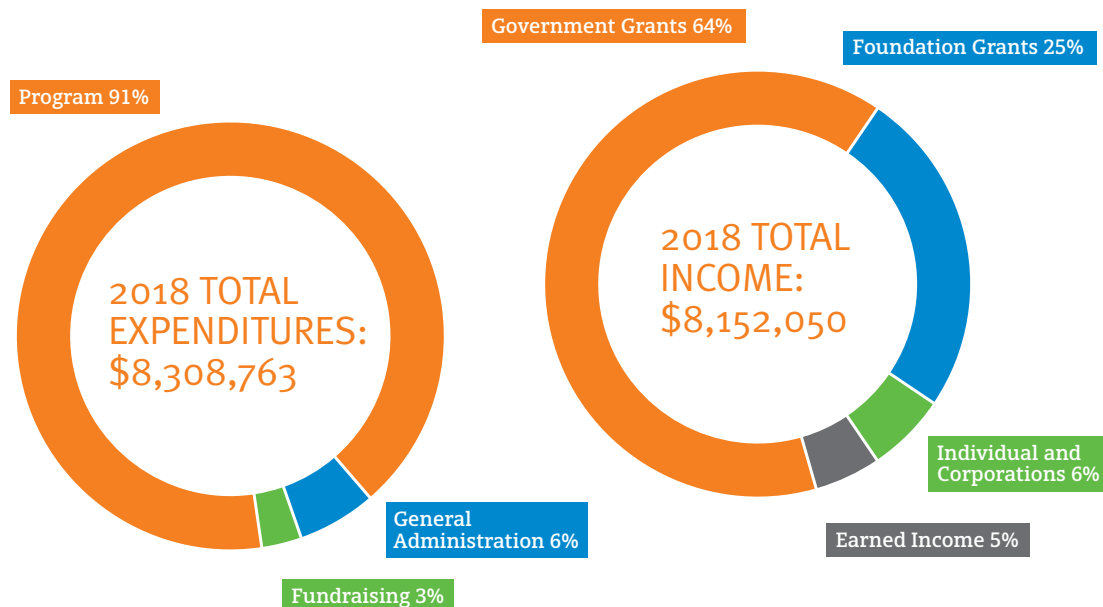
10 programs funded

603 youth impacted



86% of Refugee School Impact youth have been in this country for less than two years.

2018 FINANCIALS



2018 BOARD OF DIRECTORS

Ceil Erickson, President
Director of Community
Programs, Seattle Foundation

Mariela Barriga, Vice President
Student Success Coordinator,
Highline College

Scott Caldwell, Secretary
Group Health (ret.)

Stephanie Thomsen, Treasurer
Controller, AudienceScience

Arty Christianto
School Counselor, Bellevue
School District

Janice D'Amato
Paccar (ret.)

Jordan Lyon
Community Engagement
Producer, The Evergrey

Jim Pugel
Chief Deputy, King County
Sheriff's Office (ret.)

Jody Rosentswieg
Senior Program Officer,
Bezos Family Foundation

Sadé Smith
Attorney, King County
Department of Public Defense

Nicole Yohalem
Opportunity Youth Director,
Community Center for
Education Results

2018-2019 STAFF

Lindy Ah Sam
Danielle Baer
Benjamin Baird
Tom Bardwell
David Beard
Lisle Bertsche Kehr
Leah Bui
Rosalinda Castro-Rosas
Daisy Catague
Jeffrey Chandler
Pang Chang
Mayka Chang
Holy Chea
Michal Crkon
Justin Davis
Porter Eichenlaub
Mehateme Emiru
Therese Flynn
Andrea Fullerton
Lex Gavin
Jarrod Hamerly
Christina Hannan

Cheryl Hernandez
Omana Imani
Jackie Jainga Hyllseth
Robert Johnson
Maria Johnson
Janell Jordan
Charles Kim
Amelia Layton
Lynda Llavore
Delphi Locey
Shirley Lu
Angela Malorni
Sheely Mauck
April Miller
Kelly Riffer
Shannon Robinson
Clara Rosebrock
John Tibbetts
Nerrisah Townsend
Elizabeth Whitford
Sebastian Wilson
Ka'ohe Wong

Youth in the Best Starts for Kids' Walk Away City Collaborative, which uses the Hip Hop 2 Prevent Substance Abuse and HIV Curriculum to encourage youth to make healthy life style choices.





**School's Out[™]
Washington**

schoolsoutwashington.org



The way in which children are impacted by [the Feed Your Brain program] is immeasurable.

- Peninsula Active Learners, Feed Your Brain partner

Young person from Peninsula Active Learners, a Feed Your Brain partner.